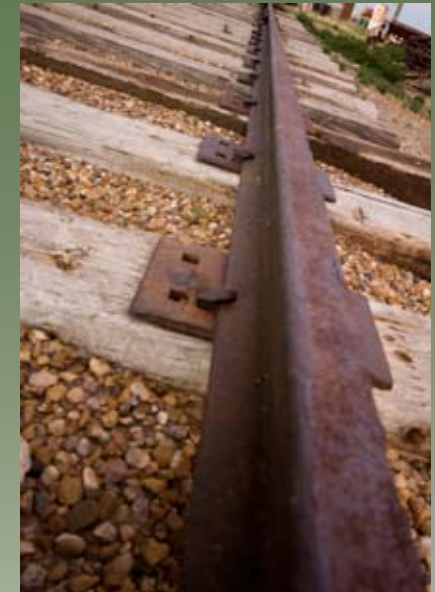


# The Prairie Elevator

history & hospitality



Have you ever wondered what is inside a Prairie Elevator?



Once the hub of the south eastern Alberta hamlet of Acadia Valley, the Prairie Elevator is now an historic site showcasing the traditions of days gone by.

Come spend an afternoon on the prairies and tour The Prairie Elevator. Experience the local farming history when the harvest was trucked to the elevator, weighed and graded before being shipped across the country on the tracks of the CN railway.

Stop by the original office, now a tea room and craft shop. Enjoy prairie favorites like saskatoon pie while shopping for the perfect reminder of your visit .



# History

Originally from Acadia, Nova Scotia, town founder, Warren Peers arrived in the area from the northwest. As he overlooked the gradual basin-like landscape he appeared to be standing before a valley. And so was born, Acadia Valley.

In 1927 the CN railroad arrived and the Wheat Pool and Pioneer elevators were built in 1928. Because of a fire in 1967, the present elevator was rebuilt in 1968, making it the newest and best preserved of the original three.

After the railway was removed in 1989, the elevator was purchased and a museum and tea house opened in 1991.

# Hospitality

The Prairie Elevator offers guided tours daily during the summer months from 10 a.m. to 5:00 p.m. Group tours are available by request.

Enjoy friendly service and county charm in the tea room and craft shop.

Wandering around the grounds you will be taken back in time with the discovery of a 1952 Cockshutt combine, 1948 fire truck, 1920's thrashing machine and an array of local antiques.

The Prairie Elevator is surrounded by mixed grain farms of barley, canola, canary seed, field peas, oats, durum and other wheats. You will see fields of yellow, blue, green and gold bending with the breezes that move across the open landscape.

# Additional Attractions

The Acadia Municipal Recreation Dam is located 6.4 km south and 3.2 km west of Acadia Valley on Highway #41. This man made dam is enjoyed by fisherman of all ages.



**For more information contact:**

The Prairie Elevator  
403.972. 2028

Municipal District of Acadia #34  
403.972.3808

